

Our Professional **PR750ELCD UPS System** marks a continuation in the tradition of excellence our engineering team has achieved. With many top features, uncompromising quality, and robust power, it is the right choice for the very demanding **SOHO, small-mid size Business, and Server-Networking backup** application environments. It is designed for mission critical applications, and for customers who value high versatility, manageability, administration flexibility and performance based on a stable multi-purpose platform.

The system has been developed based on an **advanced Line-Interactive, Energy-Saving, Pure Sine-Wave** hardware platform, able to work with every type of Power Supply. With several Battery & Surge backed outlets, unique features, and a highly controlled operation, you can go ahead and connect onto it your vital systems and related peripherals, being ready for any type of power fluctuation, or power outage!

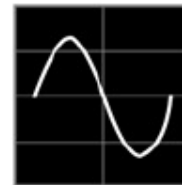
Industrial-Class features within this model makes it a top reliable performer, easy to use and manage, protecting your investments for many years to come. We are proud to recommend it to you!



- Energy Saving System based on **GreenPower UPST™** Technology
- Pure Sine-Wave Output Power covering all applications
- 0.9 Power Factor. Almost 100% efficiency!
- Line Interactive Technology and CPU based full Digital Control
- Automatic Voltage Regulator (AVR) – double Boost & single Buck
- LCD-based multi-function Status Monitor and Device Set-up. Removable LCD for better ergonomics, allowing desk or wall mounting schemes!
- Protection against EMI, RFI, Surges and Lightning Spikes
- We offer 100,000.- EUR Connected Equipment Life Time Guarantee
- Elaborate Business Power Management Software Included
- Programmable Brownout and Over-Voltage Protection
- Remote Controlled Emergency system Power-Off function
- Auto-Restart, Auto-Charge, and Scheduled Shutdown Function
- Easy and Fast Serviceability. User Replaceable Batteries, and Battery Replacement Service Indicator
- USB or Serial Computer Connectivity and SNMP/HTTP optional Communication Module for Remote Access



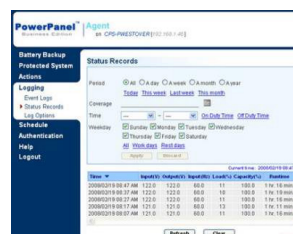
**GreenPower UPS™**  
~ 75% Electricity Saving!  
Nearly no Heat Generation  
**Great Overall Energy Efficiency**  
Lower TCO  
**Longer Battery Life**



### PURE SINE-WAVE OUTPUT

For those applications that require pure *Sine Wave* power, CyberPower provides UPS models, with true Sine Wave output, also known as *Pure Sine Wave*. They are designed for electronic devices that have *Power Factor Correction* (PFC) power supplies, as well as for small AC motors and other devices that need true sine-wave power in order to function properly.

### PowerPanel® Business Edition Management S/W



**AUTO-SHUTDOWN SOFTWARE**  
The CyberPower PowerPanel® Business Edition Management Software, is compatible with Windows 7, VISTA, XP, 2000 Pro., ME, 98, Windows Server 2003~2011, Mac and Unix/Linux

### CAPACITY & RUN-TIME:

Capacity: 750 VA / 675 Watt. Power Factor: 0.9  
Typical Runtime @ Half / Full Load: 12 / 4 min

### LCD DISPLAY:

Dot-Matrix detachable graphic LCD used to display detailed information on the UPS status, (Line / Battery Mode), and current power conditions. Displays many different Information blocks including: Load Level Meter (Power, VA, Amps, Energy), Battery Charge Level Meter, Fault Indicator, Overload Indicator, Silent Mode Indicator, AVR in Use, Battery in Use, Input Voltage Level, Output Voltage Level, Estimated Run-Time based on Actual Load, Sensitivity settings, Statistical Data, Calendar, Event Logs, advanced system Set-up interface, and more.

### INPUT POWER:

- Voltage Range: 160V ~ 290V
- Frequency Range: 50Hz / 60 Hz (+/- 3Hz) auto-sensing

### OUTPUT POWER:

- On Battery Output Voltage: Pure Sine-Wave at 230V (+/- 5%)
- On Battery Output Frequency: 50Hz / 60 Hz (+/- 1%)
- Typical Transfer Time: 4ms
- Overload Protection Scheme: On Main Power by *Circuit Breaker*, and on Battery Power by *Internal Current Limiting*
- Automatic Voltage Regulator (AVR): Double Boost & Single Buck

### BATTERY INFORMATION:

- Characteristics: Sealed Maintenance-Free Lead-Acid Batteries, 12V, 7Ah x 2, Replaceable by User
- Typical Recharge Time: 8 hours for an 100% charge with actual load attached

### STATUS INDICATORS:

- Multi-function removable LCD Display, and Power-On LED
- LED Indicators for: On-Line, On-Battery, System Fault, and Battery Replacement
- Audio Alarms for: Overload, Fault, On-Battery, and Low-Battery



### RECEPTACLES:

- Six (6) IEC 320 C13 Outlets with Battery & Surge Protection.

### CONNECTORS:

- 1 x RS-232 Serial Connector to Computer
- 1 x USB Connector to Computer (*Paired with the Serial Interface*)
- 1 x Emergency Power-Off Connector (EPO)
- Expansion port for an optional SNMP/HTTP Communication Module; (*RM CARD-202 or 203 with environment sensors*)

### MANAGEMENT and CONTROL:

- Manual Self-Test (Alarm, Battery Calibration, self-Diagnostics), Auto Re-Charge and Auto Re-Start
- Programmable Brownout and Over-Voltage Protection (Sensitivity Settings)
- Scheduled Shutdown Function
- SNMP/HTTP optional adapter for Remote Access & Management via LAN/Internet
- Power Panel® Business Edition elaborate software for Computer Connectivity and Management Control

### PHYSICAL & SAFETY INFORMATION:

Dimensions & Weight: 349 (L) x 138 (W) x 162 (H) mm  
Weight: 6.6kg  
Storage Temperature: -15°C ~ +45°C  
Operating Temperature: 0°C ~ 40°C  
Operating Humidity: 0%~95% non-condensed  
Safety: EN62040-1-1, EN 62040-2 cat C2



DISTRIBUTED BY:

CyberPower's  
Manufacturing  
Facilities are  
ISO 9001:2000,  
ISO 14000, and  
QC080000  
Approved